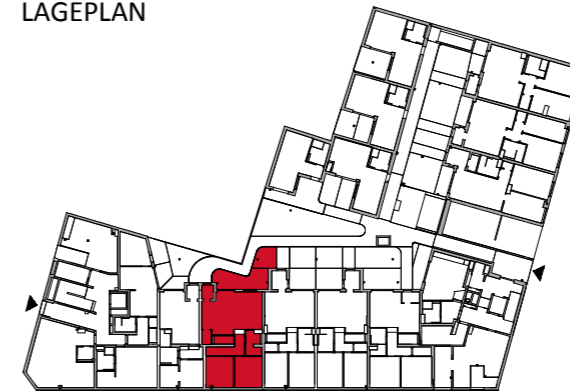


### TYP ANDRÉ HELLER "Interaktion im urbanen Raum & Platz zum Garteln"

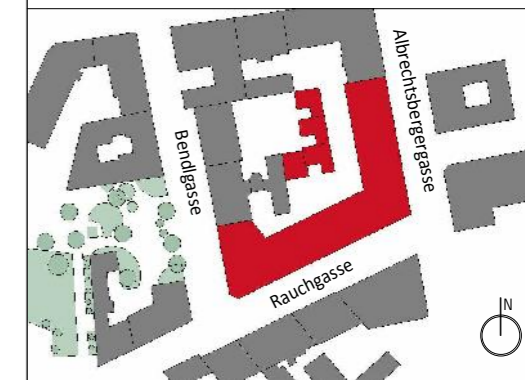
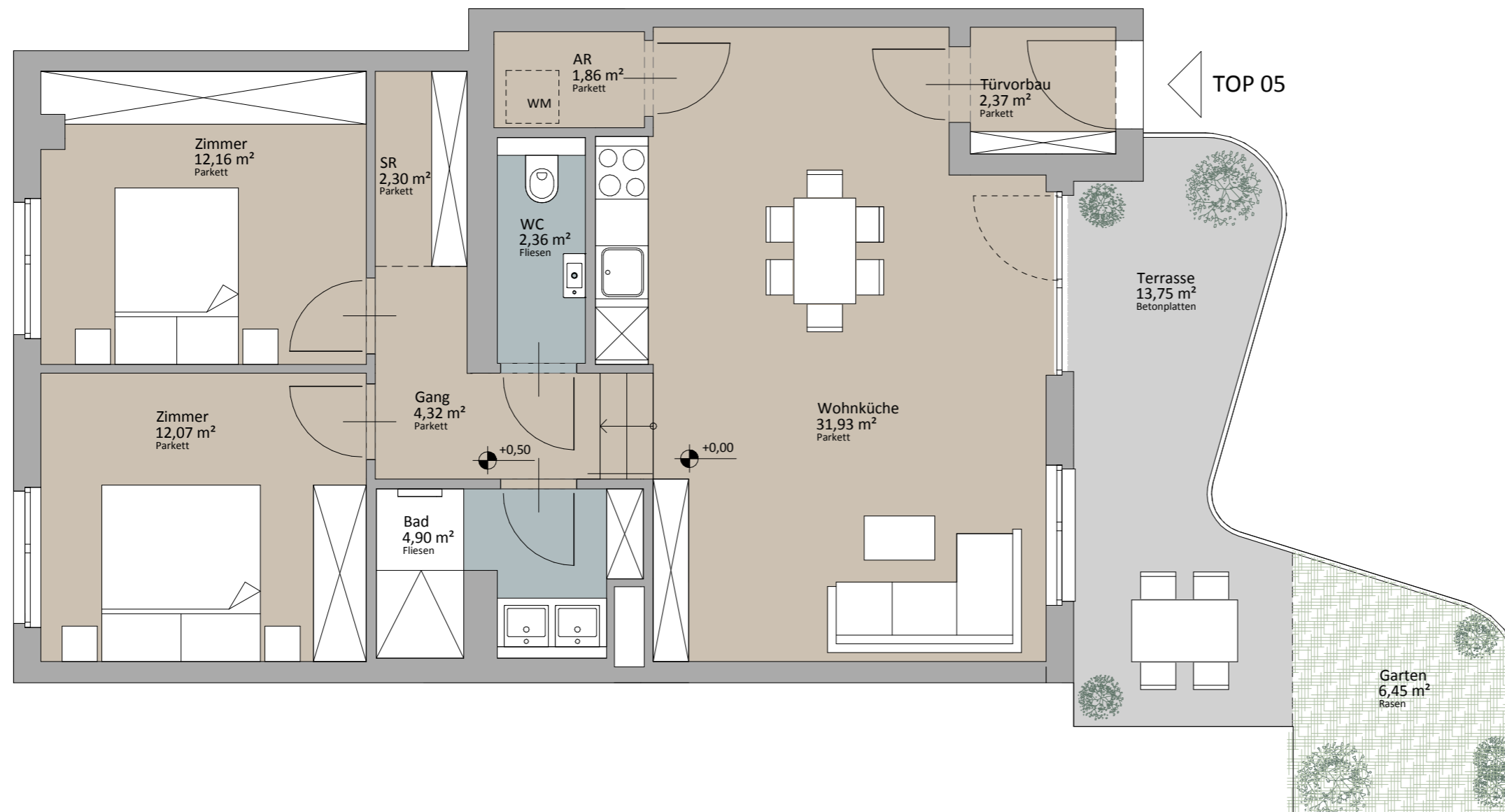
LAGEPLAN



Rustler Immobilienreuehand GmbH  
Mariahilferstraße 196, 1150 Wien  
Tel.: +43 (1) 894 97 49  
E.: office@makler.rustler.eu

### Erdgeschoss TOP A05

Zimmer	12,07 m <sup>2</sup>
Zimmer	12,16 m <sup>2</sup>
Wohnküche	31,93 m <sup>2</sup>
WC	2,36 m <sup>2</sup>
Türvorbau	2,37 m <sup>2</sup>
SR	2,30 m <sup>2</sup>
Gang	4,32 m <sup>2</sup>
Bad	4,90 m <sup>2</sup>
AR	1,86 m <sup>2</sup>
	74,28 m <sup>2</sup>
Terrasse	13,75 m <sup>2</sup>
Garten	6,45 m <sup>2</sup>
	20,20 m <sup>2</sup>



LAGEPLAN

**RUSTLER<sup>®</sup>**  
REAL ESTATE EXPERTS