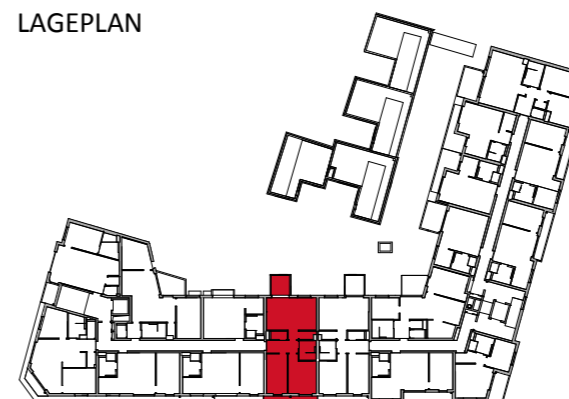


TYP WARHOL "Erweiterter Wohnraum ins bunte Freie"

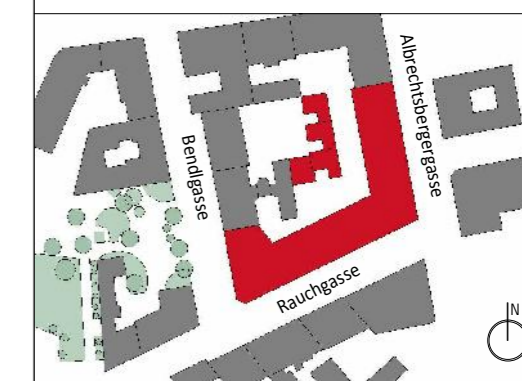
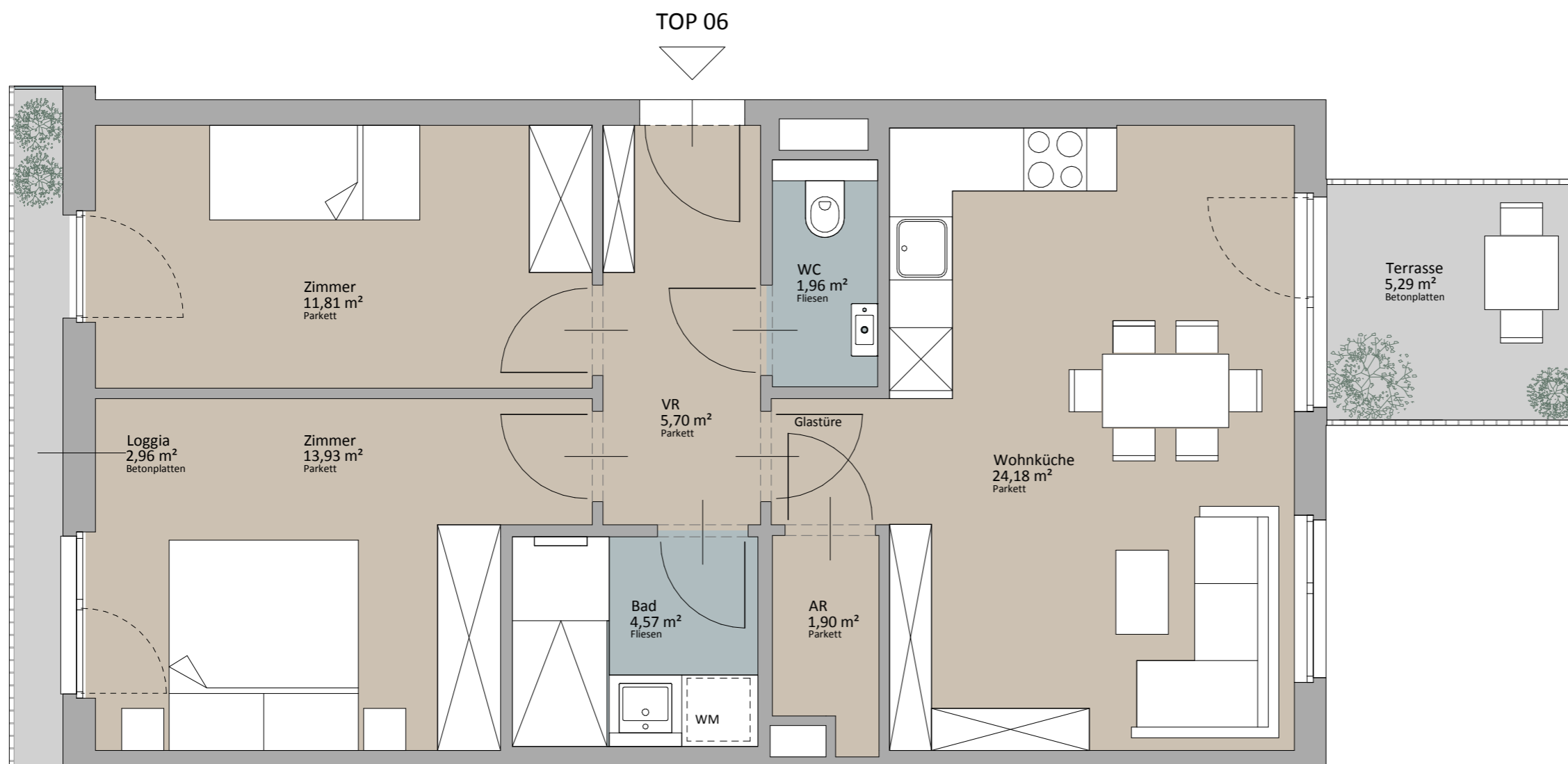
LAGEPLAN



Rustler Immobilienreuehand GmbH
Mariahilferstraße 196, 1150 Wien
Tel.: +43 (1) 894 97 49
E.: office@makler.rustler.eu

1. Obergeschoss TOP B06

Zimmer	11,81 m ²
Zimmer	13,93 m ²
Wohnküche	24,18 m ²
WC	1,96 m ²
VR	5,70 m ²
Bad	4,57 m ²
AR	1,90 m ²
	64,06 m ²
Terrasse	5,29 m ²
Loggia	2,96 m ²
	8,24 m ²



LAGEPLAN

RUSTLER[®]
REAL ESTATE EXPERTS

