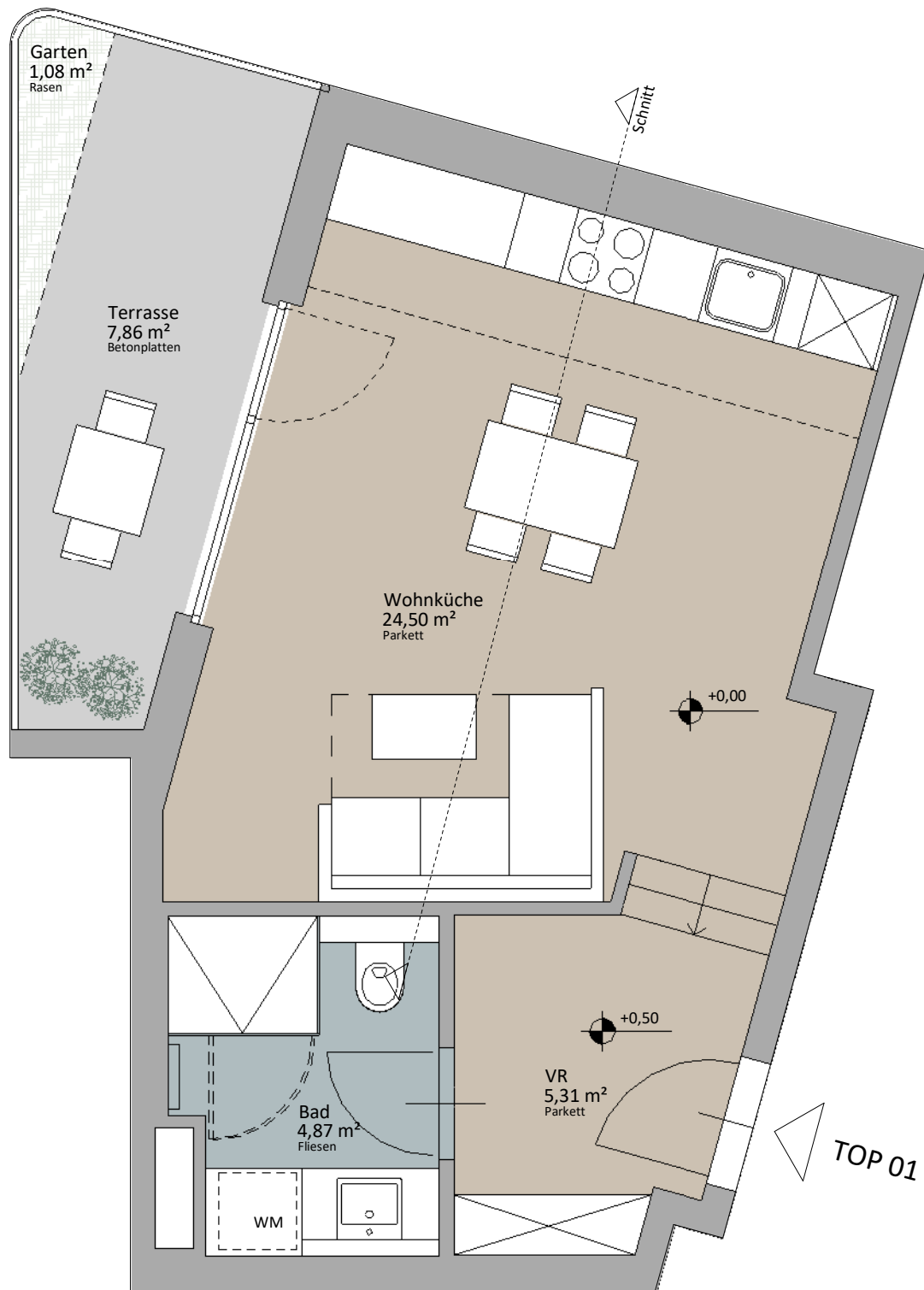
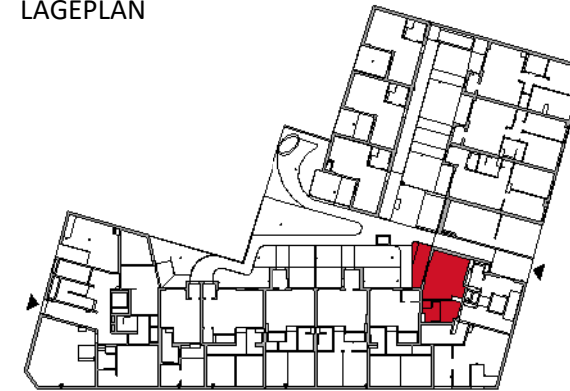


### TYP MARC

"Abstraktes Wohnen mit Grün"



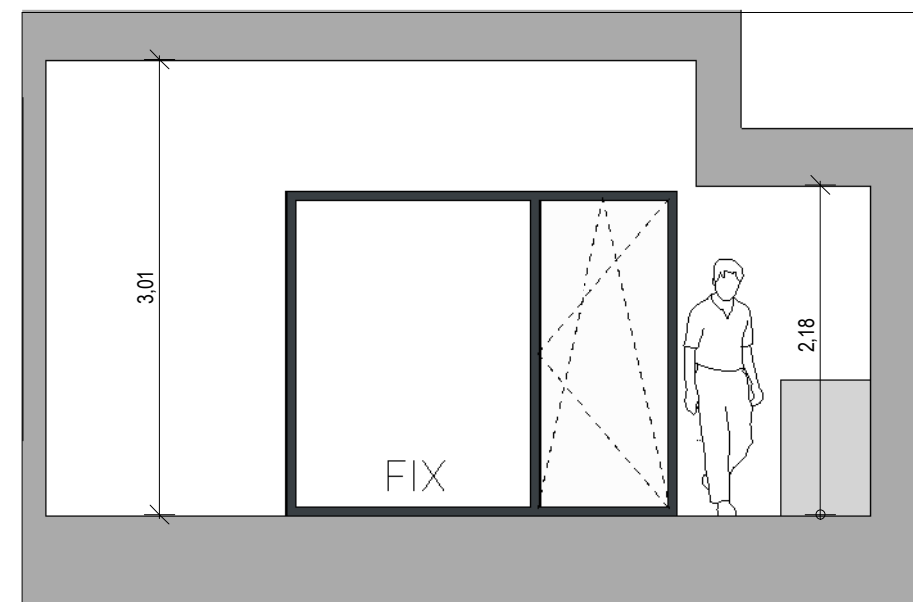
LAGEPLAN



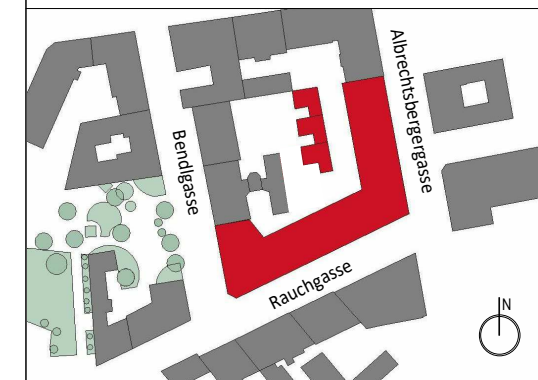
Rustler Immobilienreuehand GmbH  
Mariahilferstraße 196, 1150 Wien  
Tel.: +43 (1) 894 97 49  
E.: office@makler.rustler.eu

### Erdgeschoss TOP A01

Wohnküche	24,50 m <sup>2</sup>
VR	5,31 m <sup>2</sup>
Bad	4,87 m <sup>2</sup>
	34,68 m <sup>2</sup>
Terrasse	7,86 m <sup>2</sup>
Garten	1,08 m <sup>2</sup>
	8,94 m <sup>2</sup>



Schnitt Wohnküche



LAGEPLAN

**RUSTLER<sup>®</sup>**  
REAL ESTATE EXPERTS